



DIAMOND GRADING REPORT

December 22, 1999

Shape and Cutting Style EMERALD CUT

Measurements 6.67 x 4.90 x 3.32 mm

Weight 1.02 carat

Proportions

Depth 67.8 %

Table 69 %

Girdle THIN TO THICK

Culet NONE

Finish

Polish GOOD

Symmetry GOOD

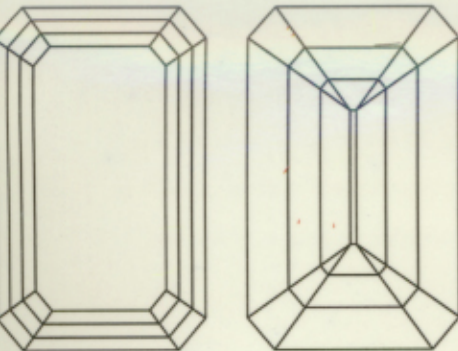
Clarity Grade VVS1

Color Grade G

Fluorescence NONE

Comments:

NONE



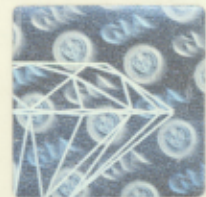
KEY TO SYMBOLS

- ~ Feather
- ^ Extra Facet

GIA CLARITY SCALE		GIA COLOR SCALE
FLAWLESS	COLORLESS	D
INTERNALLY FLAWLESS		E
VVS ₁		F
VVS ₂	VERY VERY SLIGHTLY INCLUDED	G
VS ₁		H
VS ₂	VERY SLIGHTLY INCLUDED	I
		J
SI ₁	SLIGHTLY INCLUDED	K
		L
		M
SI ₂	NEAR COLORLESS	N
		O
I ₁	FAINT	P
		Q
		R
I ₂	VERY LIGHT	S
		T
		U
I ₃	INCLUDED	V
		W
		X
		Y
		Z



This Report is not a guarantee, valuation or appraisal. This Report contains only the characteristics of the diamond described herein after it has been graded, tested, examined and analyzed by GIA Gem Trade Laboratory under 10X magnification, and/or has been inscribed, using the techniques and equipment available to GIA Gem Trade Laboratory at the time of the examination and/or at the time of being inscribed, including fully corrected triplet loupe and binocular microscope, master color comparison diamonds, standardized viewing environment and light source, electronic carat balance, synthetic diamond screening device, high intensity short wave fluorescence imaging system, short wave ultraviolet transmission detection system, optical measuring device, micro laser inscribing device, ProportionScope®, ultraviolet lamps, millimeter gauge, and ancillary instruments as necessary. Red symbols denote internal characteristics (inclusions). Green or black symbols denote external characteristics (blemishes). Diagram is an approximate representation of the diamond, and symbols shown indicate type, position, and approximate size of clarity characteristics. All clarity characteristics may not be shown. Details of finish are not shown. The recipient of this Report may wish to consult a credentialed Jeweler or Gemologist about the importance and interrelationship of cut, color, clarity and carat weight.



IMPORTANT DOCUMENT, STORE SAFELY

The security features in this document, including the hologram, security screen, microprint lines and chemical sensitivity, in addition to those not shown, exceed document security industry guidelines.

NOTICE: IMPORTANT LIMITATIONS ON BACK